

Sample Name: **Ice Cream Cake**

Tested for: **Leaflyx**

**Quality Control Testing**

Report cannot be used for OHA/OLCC compliance.

Laboratory ID: 2510045-01

Matrix: Plant Tissue

Sample Metrc ID: N/A

Lot # N/A

Batch RFID: N/A

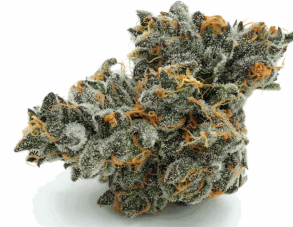
Batch Size: N/A

Harvest Date: N/A

License: N/A

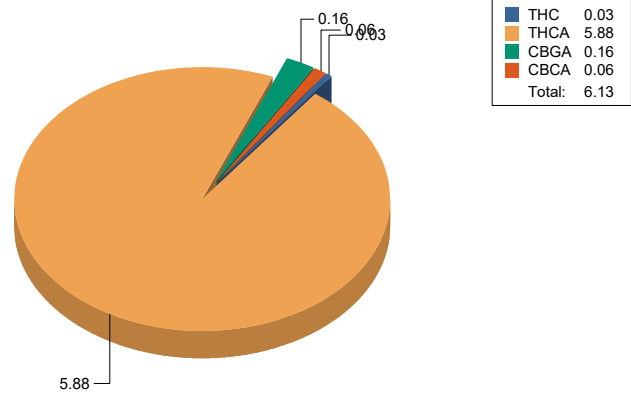
Date Sampled: 09/05/25 00:00

Date Accepted: 09/05/25



## Result Summary

ANALYSIS	VALUE	PASS/FAIL
Total Cannabinoids	6.13 %	
Total CBD	2 (0.03%) %	
Total THC	5.19 %	



  
 Breeanna Hamilton  
 Lab Director

Informational testing only, not for OLCC/OMMP/ODA compliance. These results relate only to the sample included on this report. The report may not be reproduced except in full, without the written permission of SC Laboratories. Samples tested in accordance with Oregon Administrative Rules, TNI 2016 Standard and SC Laboratories quality assurance plan unless otherwise noted.

Sample Name: **Ice Cream Cake**

Tested for: **Leaflyx**

**Quality Control Testing**

Report cannot be used for OHA/OLCC compliance.

Laboratory ID: 25I0045-01

Matrix: Plant Tissue

Sample Metrc ID: N/A

Lot # N/A

Batch RFID: N/A

Batch Size: N/A

Harvest Date: N/A

License: N/A

Date Sampled: 09/05/25 00:00

Date Accepted: 09/05/25



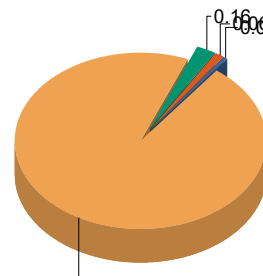
**Potency Analysis**

Date Extracted: 09/09/25

Analysis Method: UNODC 5.4.8

Date Analyzed: 09/09/25

\* - ORELAP certified analyte

Cannabinoids	% weight	mg/g	LOQ (%)	Cannabinoids Profile
<b>Total CBD ((CBDA*0.877)+CBD)</b>	< LOQ	< LOQ	0.03	
<b>Total THC ((THCA*0.877)+d9)</b>	5.19	51.9	0.03	
d9-THC (d9-Tetrahydrocannabinol)*	0.03	0.3	0.03	
d8-THC (d8-Tetrahydrocannabinol)*	< LOQ	< LOQ	0.03	
THCA (d9-Tetrahydrocannabinolic Acid)*	5.88	58.8	0.03	
CBD (Cannabidiol)*	< LOQ	< LOQ	0.03	
CBDA (Cannabidiolic Acid)*	< LOQ	< LOQ	0.03	
CBN (Cannabinol)	< LOQ	< LOQ	0.03	
CBG (Cannabigerol)	< LOQ	< LOQ	0.03	
CBGA (Cannabigerolic Acid)	0.16	1.6	0.03	
CBDV (Cannabidivarin)	< LOQ	< LOQ	0.03	
CBDVA (Cannabidivarinic Acid)	< LOQ	< LOQ	0.03	
CBC (Cannabichromene)	< LOQ	< LOQ	0.03	
CBCA (Cannabichromenic Acid)	0.06	0.6	0.03	
THCV (Tetrahydrocannabivarin)	< LOQ	< LOQ	0.03	
THCVA (Tetrahydrocannabivarinic Acid)	< LOQ	< LOQ	0.03	
<b>Total Cannabinoids</b>	6.13	61.3	0.03	

<LOQ - Results below the Limit of Quantitation

  
 Breeanna Hamilton  
 Lab Director

Informational testing only, not for OLCC/OMMP/ODA compliance. These results relate only to the sample included on this report. The report may not be reproduced except in full, without the written permission of SC Laboratories. Samples tested in accordance with Oregon Administrative Rules, TNI 2016 Standard and SC Laboratories quality assurance plan unless otherwise noted.

## Quality Control Potency

**Batch: B252746 - Potency/Terpenes**

Blank(B252746-BLK1)			Extracted - 09/09/25 14:31 Analyzed - 09/09/25 17:31					
Analyte	Result	Units	Spike Level	Source Result	%REC	%REC Limits	RPD	RPD Limit
d9-THC (d9-Tetrahydrocannabinol)	< LOQ	%						
d8-THC (d8-Tetrahydrocannabinol)	< LOQ	%						
THCA (d9-Tetrahydrocannabinolic Acid)	< LOQ	%						
CBD (Cannabidiol)	< LOQ	%						
CBDA (Cannabidiolic Acid)	< LOQ	%						
CBN (Cannabinol)	< LOQ	%						
CBG (Cannabigerol)	< LOQ	%						
CBGA (Cannabigerolic Acid)	< LOQ	%						
CBDV (Cannabidivarin)	< LOQ	%						
CBDVA (Cannabidivarinic Acid)	< LOQ	%						
CBC (Cannabichromene)	< LOQ	%						
CBCA (Cannabichromenic Acid)	< LOQ	%						
THCV (Tetrahydrocannabivarin)	< LOQ	%						
THCVA (Tetrahydrocannabivarinic Acid)	< LOQ	%						

Duplicate(B252746-DUP1)			Extracted - 09/09/25 14:31 Analyzed - 09/09/25 17:40					
Analyte	Result	Units	Spike Level	Source Result	%REC	%REC Limits	RPD	RPD Limit
d9-THC (d9-Tetrahydrocannabinol)	0.03	%		0.03			11.1	20
d8-THC (d8-Tetrahydrocannabinol)	< LOQ	%		< LOQ				20
THCA (d9-Tetrahydrocannabinolic Acid)	5.19	%		5.88			12.4	20
CBD (Cannabidiol)	< LOQ	%		< LOQ				20
CBDA (Cannabidiolic Acid)	< LOQ	%		< LOQ				20
CBN (Cannabinol)	< LOQ	%		< LOQ				20
CBG (Cannabigerol)	< LOQ	%		< LOQ				20
CBGA (Cannabigerolic Acid)	0.14	%		0.16			10.4	20
CBDV (Cannabidivarin)	< LOQ	%		< LOQ				20
CBDVA (Cannabidivarinic Acid)	< LOQ	%		< LOQ				20
CBC (Cannabichromene)	< LOQ	%		< LOQ				20
CBCA (Cannabichromenic Acid)	0.05	%		0.06			17.0	200
THCV (Tetrahydrocannabivarin)	< LOQ	%		< LOQ				20
THCVA (Tetrahydrocannabivarinic Acid)	0.008	%		0.01			33.7	200

LCS(B252746-BS1)			Extracted - 09/09/25 14:31 Analyzed - 09/09/25 17:22					
Analyte	Result	Units	Spike Level	Source Result	%REC	%REC Limits	RPD	RPD Limit

  
 Breeanna Hamilton  
 Lab Director

Informational testing only, not for OLCC/OMMP/ODA compliance. These results relate only to the sample included on this report. The report may not be reproduced except in full, without the written permission of SC Laboratories. Samples tested in accordance with Oregon Administrative Rules, TNI 2016 Standard and SC Laboratories quality assurance plan unless otherwise noted.

## Quality Control

### Potency (Continued)

**Batch: B252746 - Potency/Terpenes (Continued)**

LCS(B252746-BS1)			Extracted - 09/09/25 14:31 Analyzed - 09/09/25 17:22					
Analyte	Result	Units	Spike Level	Source Result	%REC	%REC Limits	RPD	RPD Limit
d9-THC (d9-Tetrahydrocannabinol)	0.09	%	0.0852		108	90-110		
d8-THC (d8-Tetrahydrocannabinol)	0.09	%	0.0908		101	90-110		
THCA (d9-Tetrahydrocannabinolic Acid)	0.10	%	0.103		101	90-110		
CBD (Cannabidiol)	0.10	%	0.0954		105	90-110		
CBDA (Cannabidiolic Acid)	0.09	%	0.0968		98.0	90-110		
CBN (Cannabinol)	0.002	%				80-120		
CBG (Cannabigerol)	0.008	%				80-120		
CBGA (Cannabigerolic Acid)	0.002	%				80-120		
CBDV (Cannabidivarin)	< LOQ	%				80-120		
CBDVA (Cannabidivarinic Acid)	< LOQ	%				80-120		
CBC (Cannabichromene)	< LOQ	%				80-120		
THCV (Tetrahydrocannabivarin)	< LOQ	%				80-120		



Breeanna Hamilton  
 Lab Director

Informational testing only, not for OLCC/OMMP/ODA compliance. These results relate only to the sample included on this report. The report may not be reproduced except in full, without the written permission of SC Laboratories. Samples tested in accordance with Oregon Administrative Rules, TNI 2016 Standard and SC Laboratories quality assurance plan unless otherwise noted.